

ISO8943 (2007) compliant

Accuracy better than $\pm 0.15\%$

Insensitive to pressure changes

Fully automated system

No manual set-up

Compact system



IsoFraction™

LNG Sampler

Jiskoot has developed the IsoFraction™ automatic sampling system for LNG applications, to overcome the problems associated with traditional LNG sampling and GC feed systems.

Low uncertainty

Operators report a significant improvement in uncertainty achieved typically better than $\pm 0.15\%$.

Unaffected by pressure and flow rate

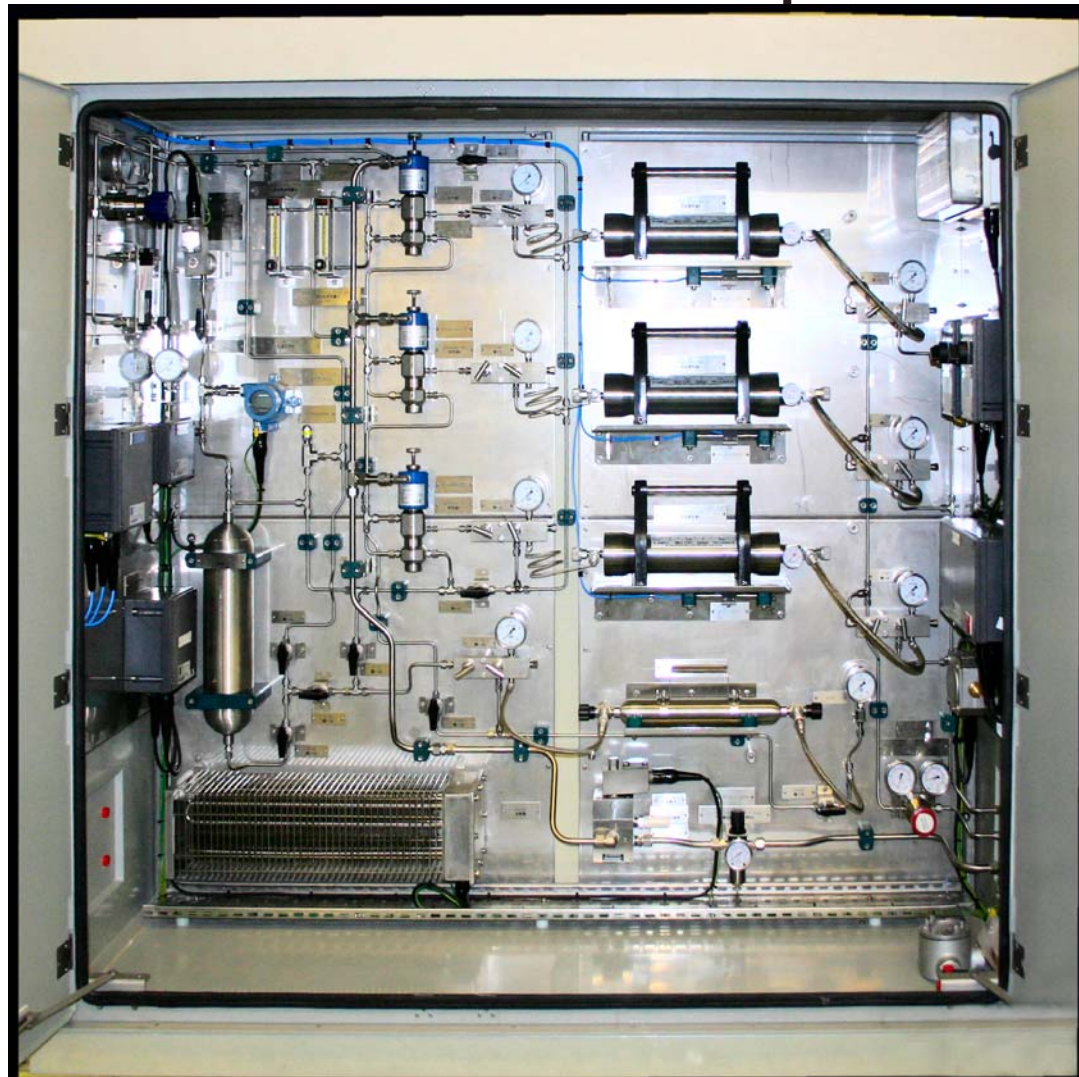
The IsoFraction™ system is designed to be unaffected by changes in line pressure or flow rate.

Fully automatic

The system does not need any operator set up or intervention, minimising the risk of operator induced errors.

Representative samples

Jiskoot uses its grab sampler and CPC technology to produce representative samples suitable for custody transfer.





Full integration with gas chromatographs

The system can be used to supply any online GC device with a representative feed.

System reliability and simplicity

Jiskoot has used its process solving approach to produce a reliable and robust system that has low maintenance and installation costs.

System overview

The IsoFraction™ LNG sampling system comprises a "gas" sampling system with an integrated vaporisation, stabilisation and control system to ensure control of the phase change of the LNG to gas with minimal lag.

The system includes take off points to enable validation and control process for representivity of GC feed.

Once LNG has been vaporised it is maintained above the dew point of the component fractions. It then flows through a conventional gas sampler where gas samples are extracted into a fixed pressure (variable volume piston) sample collection receiver (CPC).

This sampling process provides improvements over conventional methods due to the high volume of gas flowing through the system which ensures representivity of the gas both sampled, and fed to a GC.

The LNG sampling system will normally employ three gas samplers tied into a single process loop to allow three independent but comparable samples to be taken.

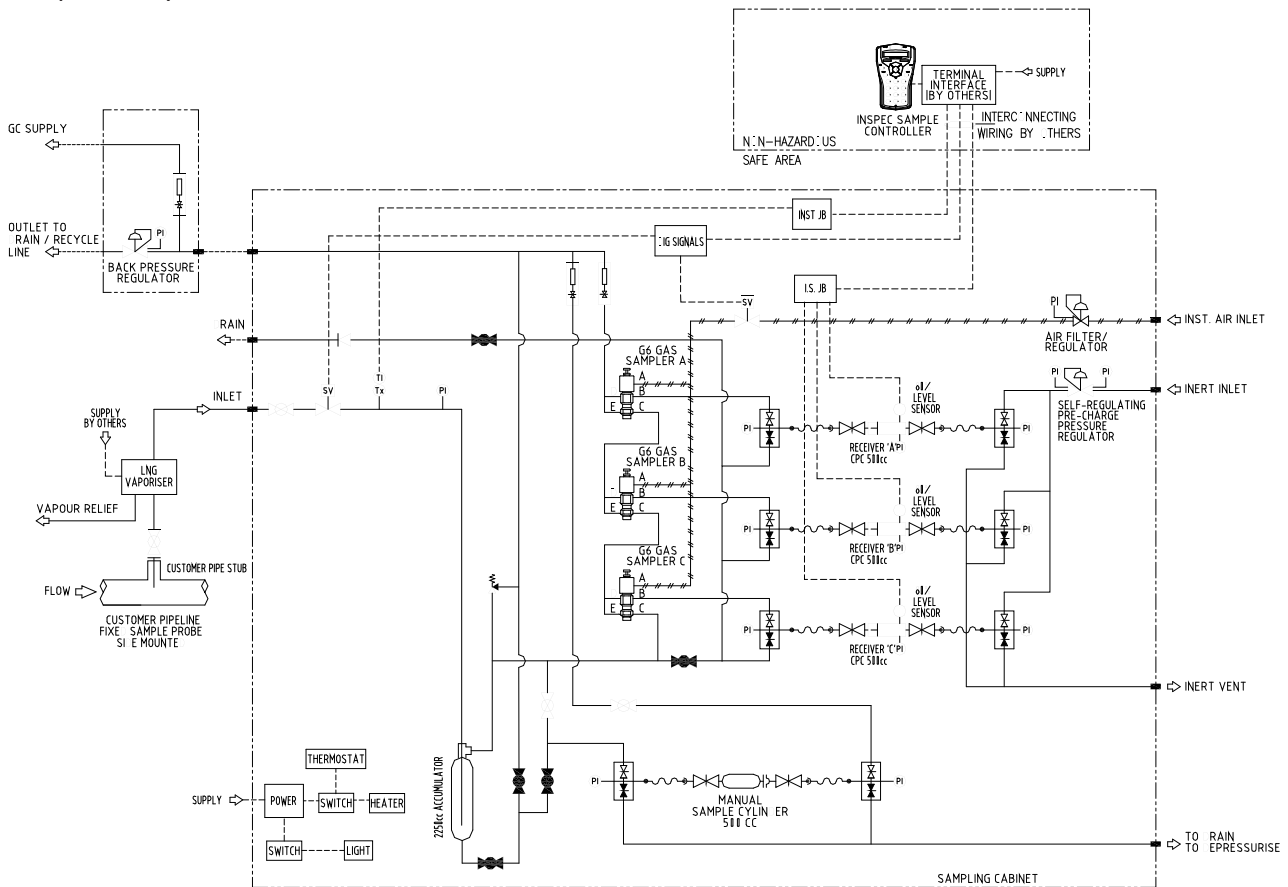
In addition, provision is made to allow

the extraction of fixed volume samples to conventional 500ml receivers at key intervals (25/50/75/100 %) of the batch.

These are "spot" samples and require the vessels to be purged to ensure representivity of a specific point in the batch.

The LNG sampling system is designed to enable pre-purging to estimate contaminants to the sampling process.

3 samples are taken and held in the Constant Pressure Sample Receivers (CPC). The use of fixed pressure receivers allows minimal atmospheric or cross batch contamination and a large number of small samples to maximise batch representivity.



	UK Jiskoot Quality Systems	USA Jiskoot Quality Systems	Cameron Measurement Systems	Jiskoot Quality Systems A Cameron Company www.jiskoot.com	
	Tel: +44 (0)1892 518000	Tel: +1 281 583 0583	Tel: +1 281 582 9500	 www.c-a-m.com/flo	
	Fax: +44 (0)1892 518100	Fax: +1 281 583 0587	Fax: +1 281 582 9599		
	Email: ms-jiskootusales@c-a-m.com				Email: ms-marketing@c-a-m.com
	Email: ms-jiskootusales@c-a-m.com				
Email: ms-jiskootusales@c-a-m.com					