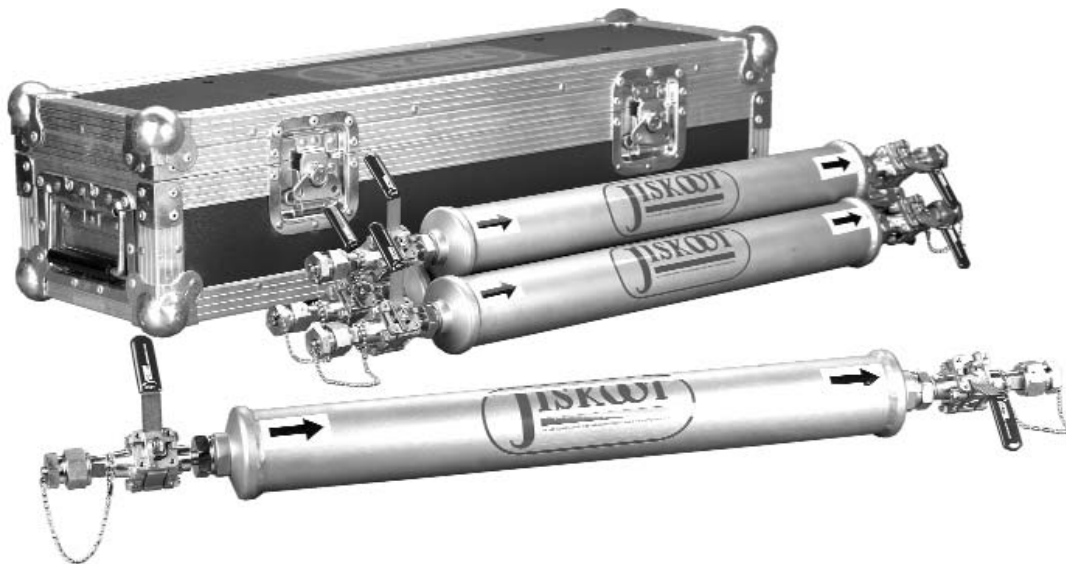




Wet Gas Sampler

(patent pending)



Data Sheet S121-0812-3 • Wet Gas Sampler

Extraction of a representative sample of wet gas is often required for reservoir management, compensation, monitoring, allocation or taxation.

Jiskoot has designed a system for this duty. The gas and liquid mass flow ratios are measured. Liquid and gas samples are retrieved for quantity and composition analysis.

The system comprises a take-off probe and a bypass loop in an enclosure containing a mass flow meter; molecular sieves and sample collection receivers.

The take-off probe is mounted in the line at a suitable position and has multiple inlet points to profile the pipeline. The number and size of the inlets are designed for each application dependant on the flow regimes present.

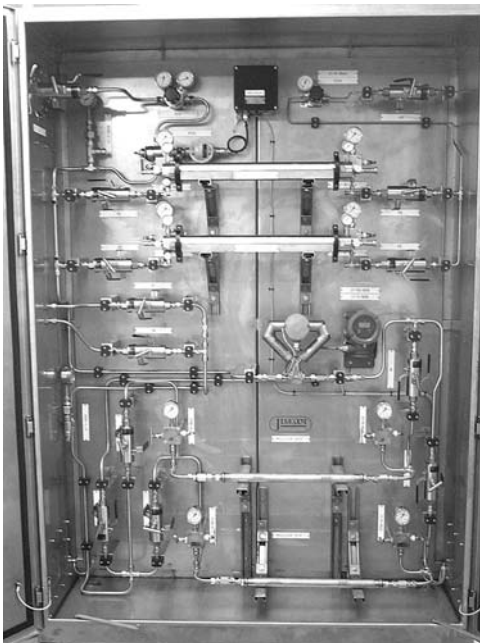
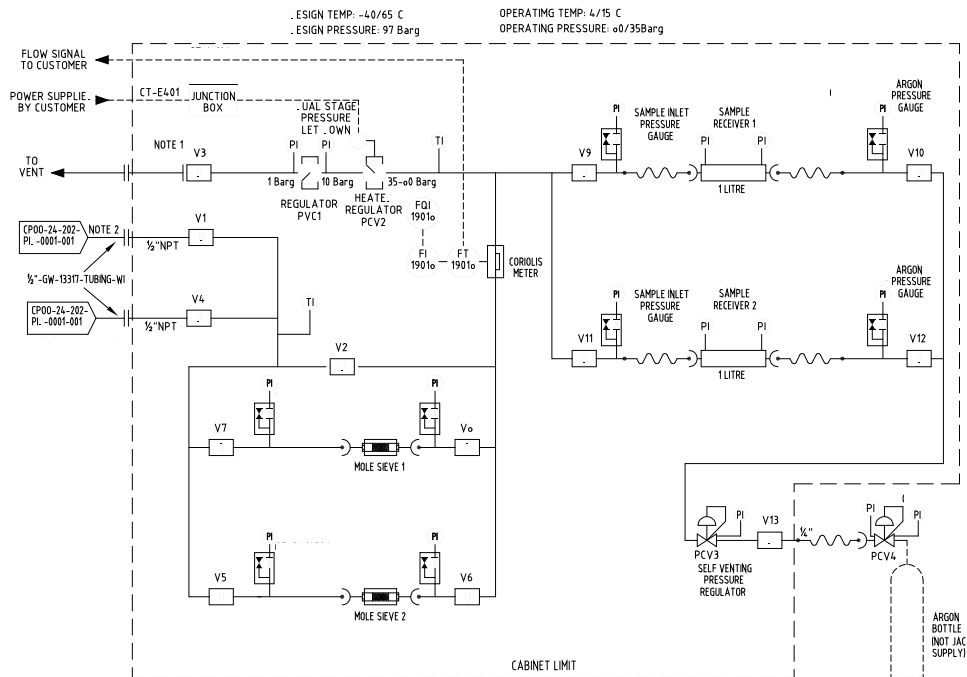
Wet gas flows through the molecular sieve, which is a customized device, designed to scrub

and trap all liquids from the gas stream. The liquid is retained and the mass flow of dry gas is measured by the flow meter. A sample of dry gas is also taken for analysis.

The molecular sieves will have been weighed using a mass balance before placing in the system. At the end of the sampling process the molecular sieves are removed and weighed and the increase in mass noted.

The liquid mass ratio to dry gas is established by comparing the mass of liquids collected with dry mass of gas from which it was extracted. This ratio can be used in a variety of equations to directly compensate the wet gas measurement totals.

To establish the water, methanol and condensate percentages, the sample of liquid can be removed from the molecular sieve for analysis and the sieve re-used.



Dual wet gas sampling system for North Sea project

MEASUREMENT SYSTEMS

DIVISION HEADQUARTERS
HOUSTON, TEXAS
+1 800 654 3760

JISKOOT QUALITY SYSTEMS
HEADQUARTERS
TUNBRIDGE WELLS, KENT, UK

+44 1892 518000
ms-jiskootinformation@c-a-m.com

JISKOOT QUALITY SYSTEMS
US TECH CENTER
HOUSTON, TEXAS

+1 281 582 9500
ms-jiskootsales@c-a-m.com

USA • CANADA • UK • CHINA • UAE • ALGERIA • MALAYSIA • INDIA • KENYA

www.c-a-m.com/jiskoot

These are standard design specifications. We operate a policy of continuous development and the information on this sheet may be updated without notice.

