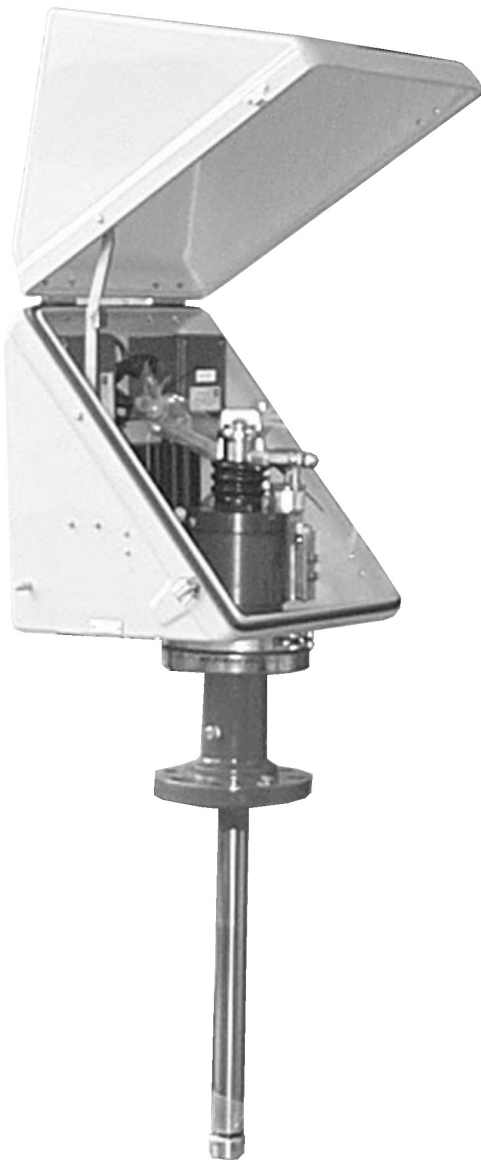




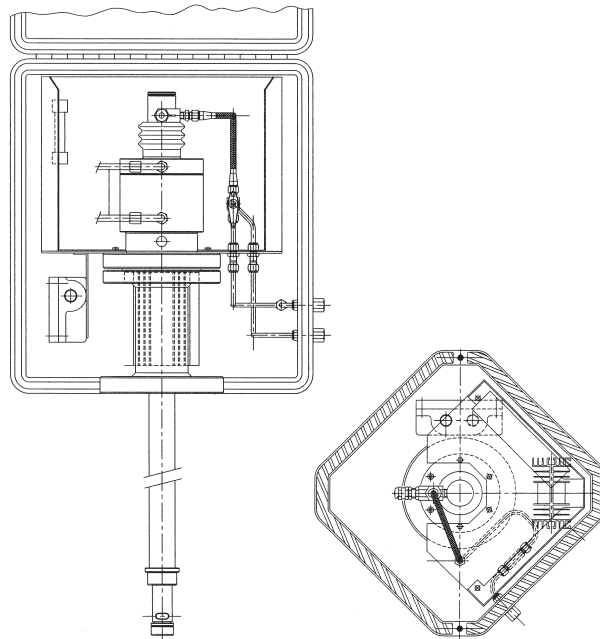
Probe Sampler Weatherproof Housing



The Probe Sampler Weatherproof Housing is a GRP protective top box designed to house the actuator/electric motor of the sampler and all the required ancillaries, such as an in-line check valve, a solenoid valve, coil & junction box, a flexible hose, 1/4" stainless steel tube and fittings.

Also available is a 100 watt anti-frost/anti-condensation heater and a fused junction box. If waxing is considered to be a problem, then a larger capacity heater can be added to the housing upon request.

Note: The lid of the sampler housing must be kept closed at all times except when undertaking maintenance.



Data Sheet SI25-0505-2 • Probe Sampler Weatherproof Housing



Specifications

Enclosures

Ingress protection (Equipment only)	210/710P	IP65	Depending upon selected options
	710EL	IP55	
Dimensions	210/710P (Pneumatic) sampler housing:	400 x 450 x 400 mm (W x H x D)	
	710EL (Electric) sampler housing:	700 x 450 x 400 mm (W x H x D)	
	Weight	25 kg	
Connections	Air inlet	1/4" NPT female	
	Sample outlet	1/4" NPT female	
	Solenoid coil junction	M20 cable entry	
	Heater junction box	M20 cable entry	

Utilities

Heating system	115-volt / 230-volt AC 1Ph +/- 10%	50/60Hz (100 Watts)
-----------------------	------------------------------------	---------------------

Actuation Data 710EL

Actuation method	Motor driven
Motor supply	440V AC - 50/60Hz Three phase. (ATEX only)
Consumption	60W nominal
Hazardous area certification	ATEX EExd IIB T4
Solenoid coil:	24-volt DC (22 Watts)
	115-volt AC / 230-volt AC +/- 10% 50/60Hz (8 Watts)
Actuation signal	250ms Pulse, Maximum

Actuation data 210P

	210P Probe	210P-HP Probe
Actuation method	Pneumatic	Pneumatic
Air supply range	4 to 10 bar / 60 to 145 p.s.i.* (Lubricated air recommended)	4 to 10 bar / 60 to 145 p.s.i.* (Lubricated air recommended)
Air consumption (30 grabs/min)	0.47 ft ³ /min[CFM]-(0.8m ³ /hr)@ 5bar*	1.0 ft ³ /min[CFM]-(1.67m ³ /hr)@ 5bar*
Actuator connections	2 x 1/4"NPT female	2 x 1/4"NPT female
Actuation signal	250ms Pulse, Min	250ms Pulse, Min

* Maximum Grab rate, Consumption and supply requirements are dependant on process conditions, i.e. Line pressure and fluid viscosity.



UK
Jiskoot Quality Systems

Tel: +44 (0)1892 518000
Fax: +44 (0)1892 518100

Email: ms-jiskootuksales@c-a-m.com

USA
Jiskoot Quality Systems

Tel: +1 281 583 0583
Fax: +1 281 583 0587

Email: ms-jiskootusasales@c-a-m.com

Cameron
Measurement Systems

Tel: +1 281 582 9500
Fax: +1 281 582 9599

Email: ms-marketing@c-a-m.com

Jiskoot Quality Systems
A Cameron Company
www.jiskoot.com



www.c-a-m.com/flo